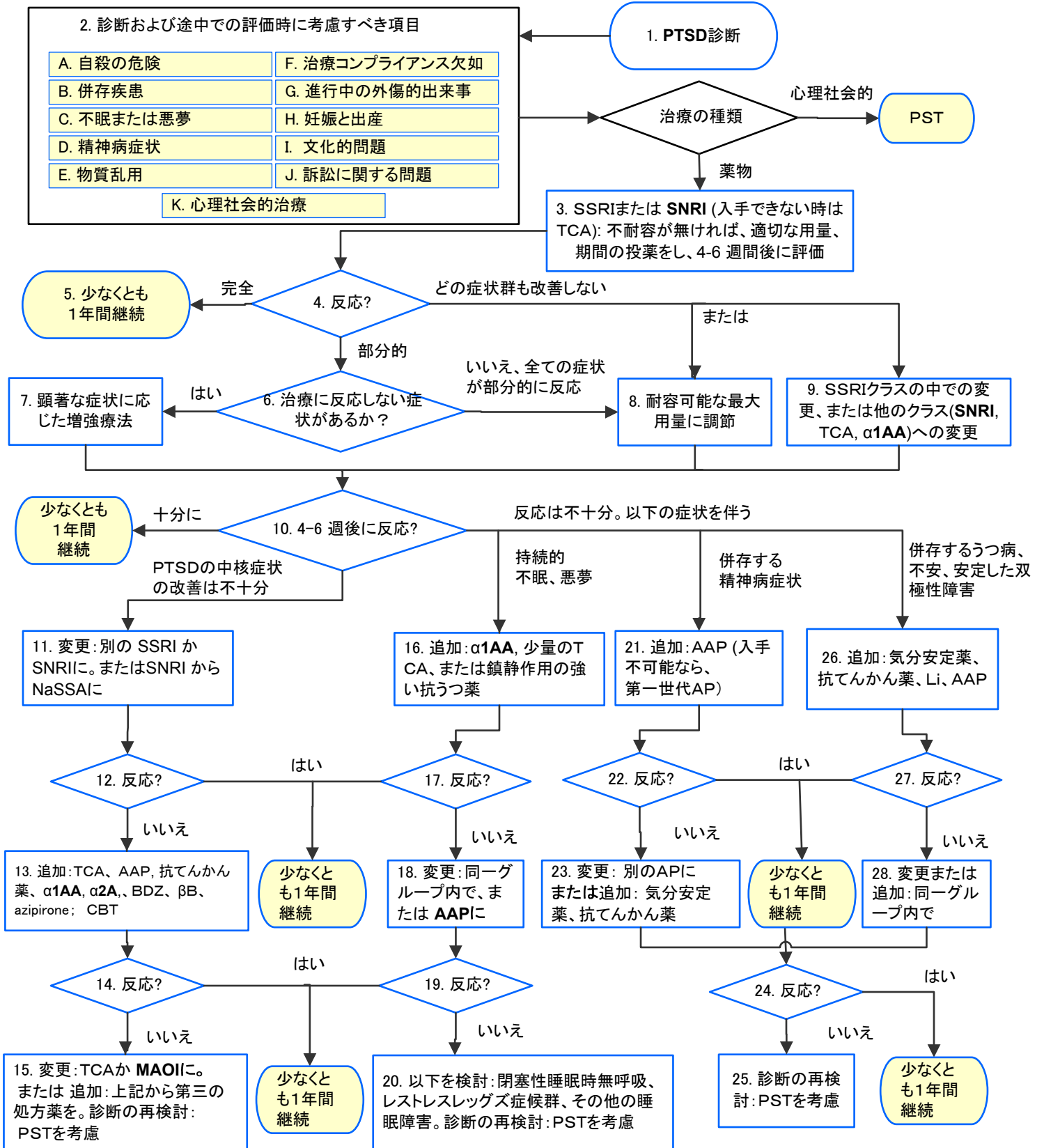


IPAP Post-Traumatic Stress Disorder (PTSD) アルゴリズム v. 1.0

専門家による使用に限る。患者が使用するものではない。



KEY: $\alpha 1AA$ = $\alpha 1$ -adrenergic antagonist; $\alpha 2A$ = $\alpha 2$ -agonist; AP=antipsychotic; AAP=atypical antipsychotic; βB =beta-blocker; BDZ=benzodiazepine; CBT=cognitive behavioral therapy; Dx=Diagnosis; Li=Lithium; MAOI = monamine oxidase inhibitor; NaSSA = noradrenergic and selective serotonergic antidepressant; PST=Psychosocial Treatment; Resp=Response; SNRI = serotonin and noradrenaline reuptake inhibitor; SSRI = selective serotonin reuptake inhibitor; Sx=Symptoms; TCA = tricyclic antidepressant